

ANALYZING WORKPLACE INJURIES IN THE Health Care and Social Assistance Industry

To reduce workplace injuries and fatalities, we must understand when, why and how they happen. Having these specific analytics on hand will allow businesses in hazardous industries to target problem areas and initiate solutions that will lower the number of workplace accidents.

The Health Care and Social Assistance sector is comprised of establishments primarily engaged in providing ambulatory health care services, hospitals, nursing and residential care facilities, and social assistance. This includes individual and family services, community food and housing, emergency and other relief services, vocational rehabilitation services, and child day care services.

The highest number of injury incidents in the Health Care and Social Assistance industry occurred:



at
Noon



on
Wednesday



in
December



on
Fingers/
Thumbs



on
Females



within
20-29 Age
Group



in
St. Louis
County

Ranked #3 in Workplace Fatalities

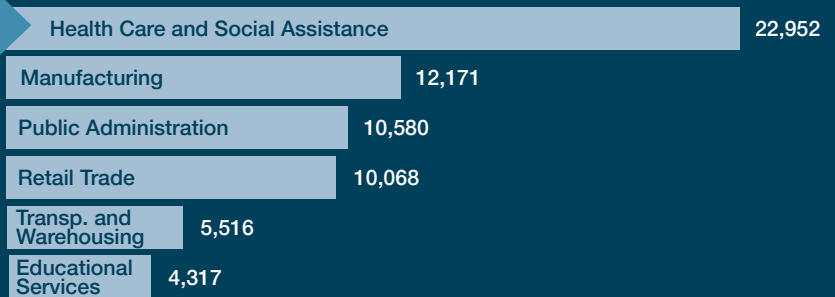
14 out of 119 Fatalities are in the Health Care and Social Assistance Industry ▶ 11.76%



RANKED #1 IN HIGHEST NUMBER OF INJURY INCIDENTS

Total Incidents in Top 6 Industries ▶ 65,604
Total Incidents in All Industries ▶ 90,956
72% of All Incidents are in Top 6 Industries

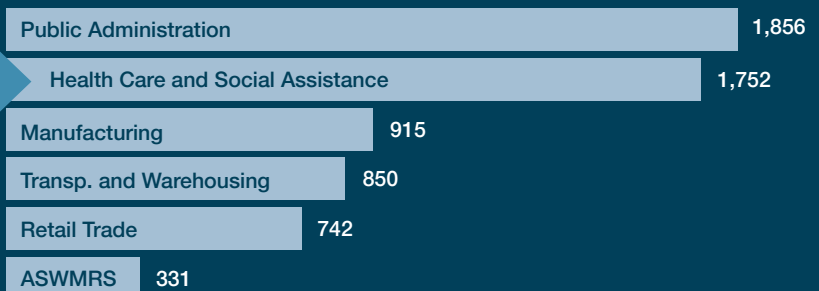
Top Industries in Number of Injury Incidents



RANKED #2 IN THE MOST LOST TIME INJURY INCIDENTS

Total Lost Time Incidents in Top 6 Industries ▶ 6,446
Total Lost Time Incidents in All Industries ▶ 8,292
78% of Lost Time Incidents are in Top 6 Industries

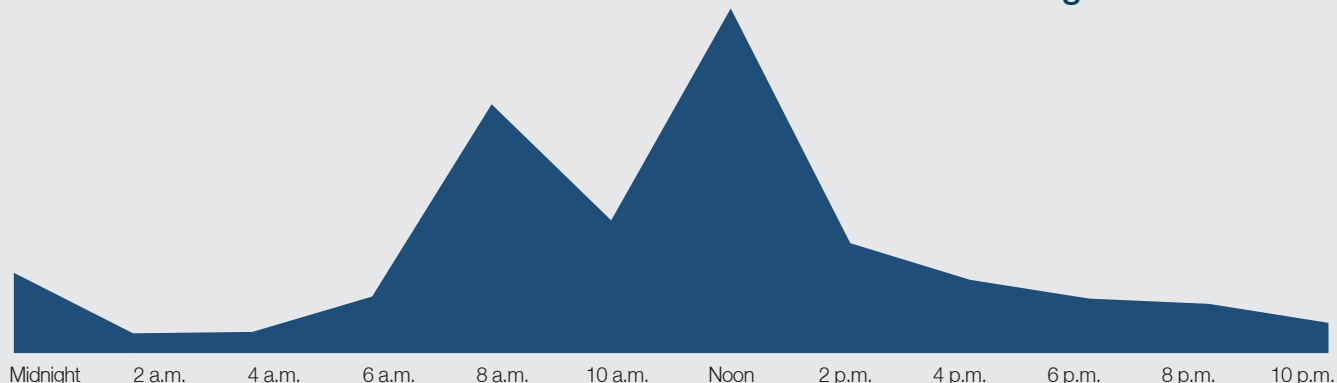
Top Industries in Lost Time Injury Incidents





Injury Incidents by Time of Day

Most Health Care and Social Assistance incidents occurred during the Noon hour.



Injury Incidents by Day of the Week

Most Health Care and Social Assistance incidents occurred on a Wednesday.

S	M	T	W	T	F	S
1,888	4,132	3,795	3,834	3,791	3,542	1,970



Injury Incidents by Month

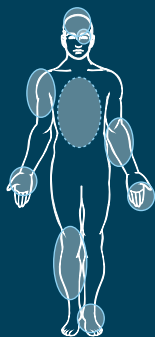
The highest number of Health Care and Social Assistance incidents occurred in December.

JAN	FEB	MAR
1,996	1,683	1,516
APR	MAY	JUN
1,546	1,713	1,493
JUL	AUG	SEP
1,729	1,641	1,844
OCT	NOV	DEC
2,151	2,781	2,841



Top 10 Injury Incidents by Body Part

Fingers/thumbs were the most injured body part in Health Care and Social Assistance.

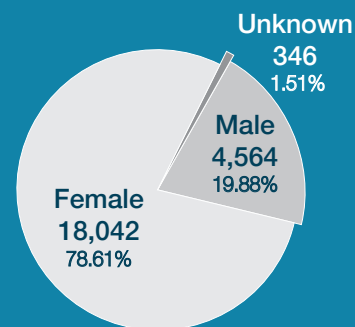


Finger(s)/Thumb(s)	2,963
Lungs/Internal Organs	2,770
Multiple Body Parts	2,628
Body Systems	2,623
Back	1,595
Wrist(s)/Hands(s)	1,564
Knee(s)/Lower Leg(s)	1,241
No Physical Injury	1,209
Upper Arm(s)/Shoulder(s)	1,104
Ankle(s)/Foot/Feet	884



Injury Incidents by Gender

In Health Care and Social Assistance, females had more incidents than males.



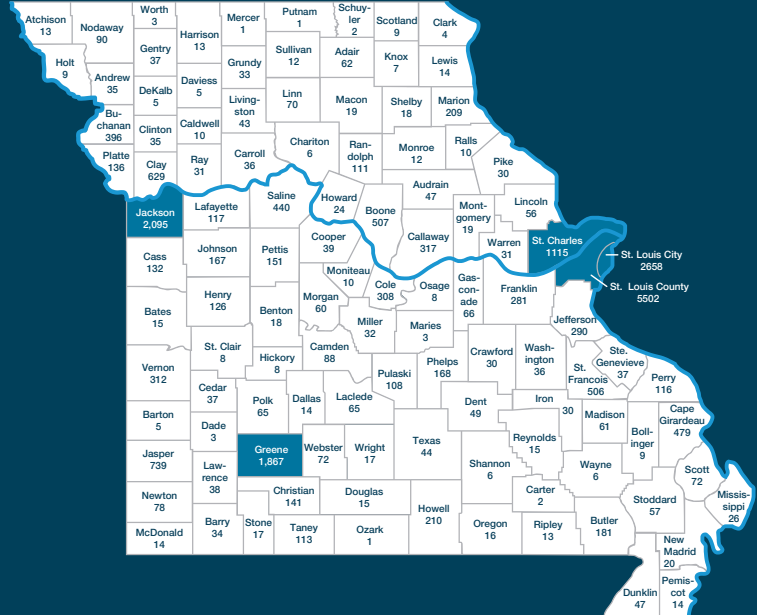


Incidents by Age Group
The 20-29 age group had the highest number of injury incidents in this industry.

Age Group	Health Care and Social Assistance	All Industries Total
10-15	3	41
16-19	428	3,466
20-29	5,810	21,808 <small>Highest Total</small>
30-39	5,399	19,836
40-49	4,272	17,576
50-59	4,481	18,283
60-69	2,288	8,714
70-79	254	1,110
80-89	17	118
Unknown	1	5



Incidents by County
St. Louis County had the most incidents in Health Care and Social Assistance.



Top 5 Counties with the Most Incidents

St. Louis County	5,502		
St. Louis City	2,658	Greene	1,867
Jackson	2,095	St. Charles	1,115

Injury Incidents by Cause

Most health care and social assistance incidents occur due to the pandemic

Pandemic	5,703
Fellow Worker/Patient	2,038
Lifting	1,445
Absorption, Ingestion, Inhalation, NOC	1,421
Handtool, Utensil (Not Powered)	1,220

Injury Incidents by Nature

The highest number of health care and social assistance injury incidents are COVID-19

COVID-19	4,803
Strain or Tear	3,954
Contusion	3,380
Puncture	2,546
All Other Specific Injuries, NOC	1,605

Visit safeatwork.mo.gov to learn more ways to keep your workplace safe.

