

# ANALYZING WORKPLACE INJURIES IN THE Manufacturing Industry

To eliminate workplace injuries and fatalities, we must understand when, why and how they happen. Having these specific analytics on hand will allow businesses in hazardous industries to target problem areas and initiate solutions that will lower the number of workplace accidents.

The Manufacturing sector is comprised of establishments engaged in the mechanical, physical or chemical transformation of materials, substances or components into new products.

The highest number of injury incidents in the Manufacturing industry occurred:



at  
Noon



on  
Tuesday



in  
February



on  
Multiple  
Body Parts



on  
Males



within  
50-59 Age  
Group



in  
St. Louis  
County

Ranked #2 in Workplace Fatalities

17 out of 119 Fatalities are in Manufacturing ▶ 14.29%



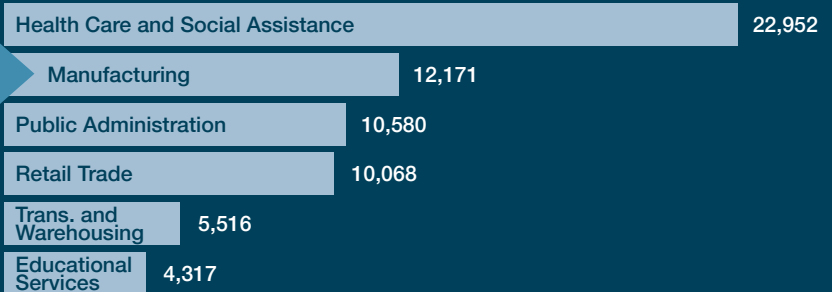
## Top Industries in Number of Injury Incidents

**RANKED #2**  
 IN HIGHEST NUMBER OF  
 INJURY INCIDENTS

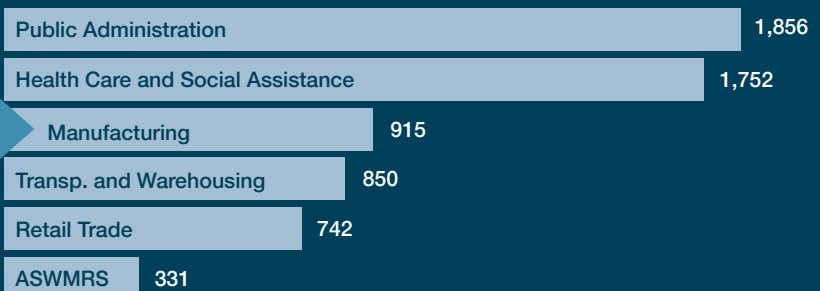
Total Incidents in Top 6 Industries ▶ 65,604  
 Total Incidents in All Industries ▶ 90,956  
 72% of All Incidents are in Top 6 Industries

Total Lost Time Incidents in Top 6 Industries ▶ 6,446  
 Total Lost Time Incidents in All Industries ▶ 8,292  
 78% of Lost Time Incidents are in Top 6 Industries

**RANKED #3**  
 IN THE MOST LOST TIME  
 INJURY INCIDENTS



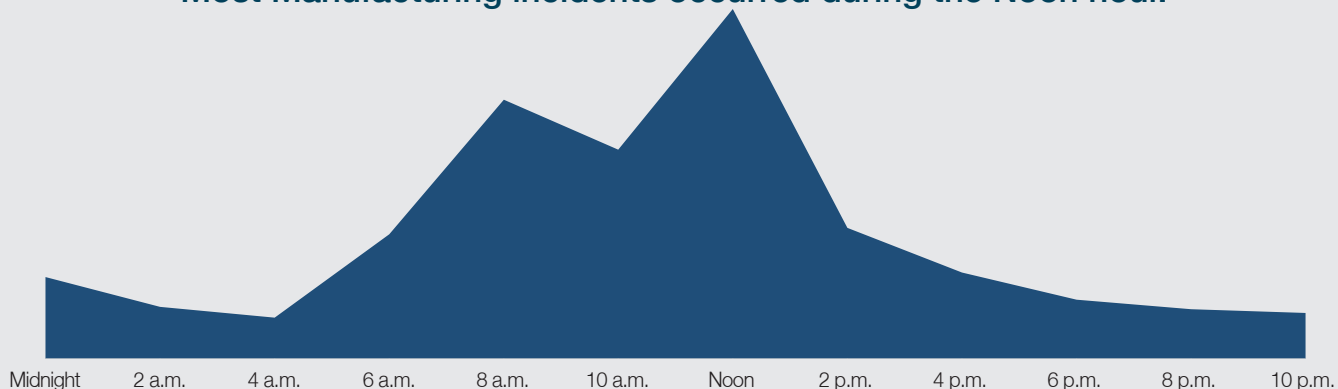
## Top Industries in Lost Time Injury Incidents





### Injury Incidents by Time of Day

Most Manufacturing incidents occurred during the Noon hour.



### Injury Incidents by Day of the Week

Most Manufacturing incidents occurred on a Tuesday.

S	M	T	W	T	F	S
1,888	2,313	2,344	2,286	2,242	1,848	713



### Injury Incidents by Month

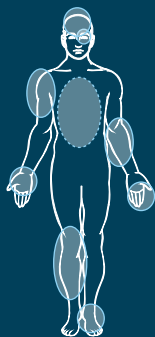
The highest number of Manufacturing incidents occurred in February.

JAN	FEB	MAR
1,100	1,229	1,110
APR	MAY	JUN
734	776	987
JUL	AUG	SEP
1,152	1,170	1,128
OCT	NOV	DEC
1,082	876	827



### Top 10 Injury Incidents by Body Part

Multiple body parts were the most injured body part in Manufacturing.



Multiple Body Parts	1,814
Finger(s)/Thumb(s)	1,690
Wrist(s)/Hand(s)	1,573
Upper Arm(s)/Shoulder(s)	1,115
Back	1,008
Knee(s)/Lower Leg(s)	899
Elbow(s)/Lower Arm(s)	772
Ankle(s)/Foot/Feet	708
Eye(s)	519
Abdomen/Groin/Buttocks	241

Unknown  
100  
0.82%

Male  
8,751  
71.90%

Female  
3,320  
27.28%



### Injury Incidents by Gender

In Manufacturing, males had over two times more incidents than females.

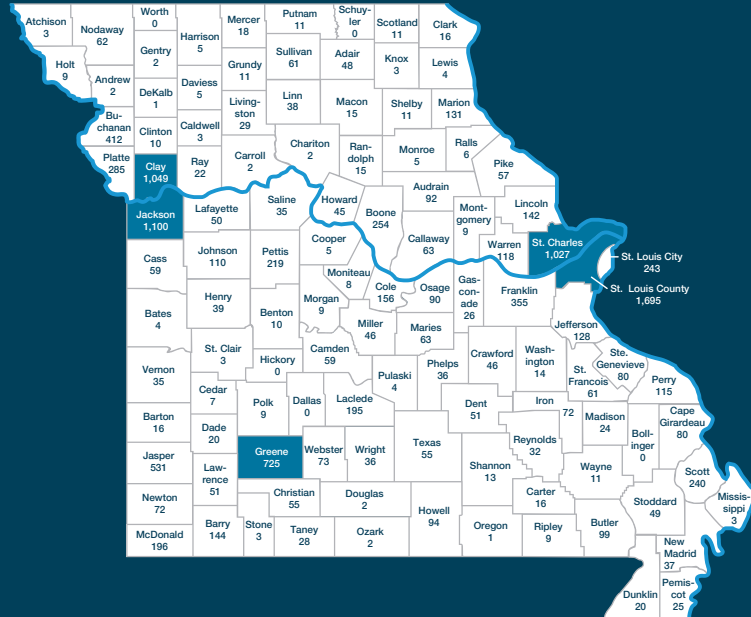


**Incidents by Age Group**  
**The 50-59 age group had the highest number of injury incidents in Manufacturing.**

Age Group	Manufacturing	All Industries Total
10-15	3	41
16-19	255	3,466
20-29	2,402	21,808 <small>Highest Total</small>
30-39	2,669	19,835
40-49	2,680	17,576
50-59	2,817	18,283
60-69	1,256	8,714
70-79	78	1,110
80-89	10	118
Unknown	1	5



**Incidents by County**  
**St. Louis County had the most Manufacturing incidents.**



**Top 5 Counties with the Most Incidents**

St. Louis County	1,695	St. Charles	1,027
Jackson	1,100	Greene	725
Clay	1,049		

**Injury Incidents by Cause**

**Most manufacturing incidents occur due to lifting**

Lifting	1,178
Strain or Injury by, NOC	931
Repetitive Motion	822
Pushing or Pulling	667
On Same Level	577

**Injury Incidents by Nature**

**The highest number of manufacturing injury incidents are strain and tears**

Strain or Tear	3,199
Laceration	1,660
Contusion	1,625
Sprain or Tear	1,167
All Other Specific Injuries, NOC	778

Visit [safeatwork.mo.gov](http://safeatwork.mo.gov) to learn more ways to keep your workplace safe.

