

ANALYZING WORKPLACE INJURIES IN THE Public Administration Industry

To eliminate workplace injuries and fatalities, we must understand when, why and how they happen. Having these specific analytics on hand will allow businesses in hazardous industries to target problem areas and initiate solutions that will lower the number of workplace accidents.

The Public Administration sector is comprised of federal, state and local government agencies that administer, oversee and manage public programs and have executive, legislative or judicial authority over other institutions within a given area. These agencies also set policy, create laws, adjudicate civil and criminal legal cases, and provide for public safety and for national defense.

The highest number of injury incidents in Public Administration occurred:



at
Noon



on
Monday



in
December



on
Multiple
Body Parts



on
Males



within
30-39 Age
Group



in
Jackson
County

Ranked #3 in Workplace Fatalities

14 out of 119 Fatalities are in Public Administration ▶ 11.76%



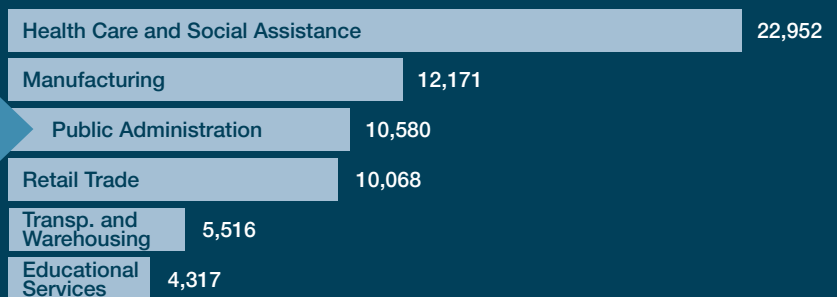
Total Incidents in Top 6 Industries ▶ 65,604

Total Incidents in All Industries ▶ 90,956

72% of All Incidents are in Top 6 Industries

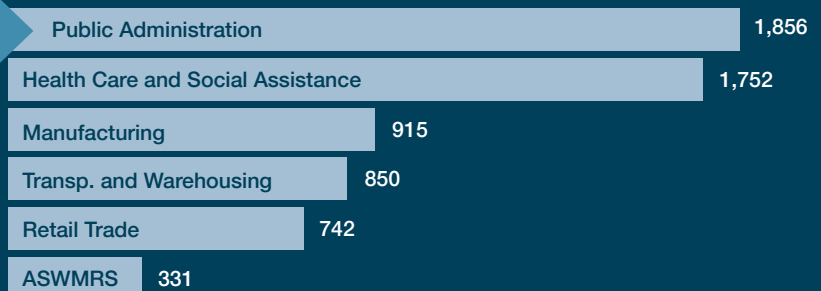
RANKED #3
IN HIGHEST NUMBER OF
INJURY INCIDENTS

Top Industries in Number of Injury Incidents



RANKED #1
IN THE MOST LOST TIME
INJURY INCIDENTS

Top Industries in Lost Time Injury Incidents



Total Lost Time Incidents in Top 6 Industries ▶ 6,446

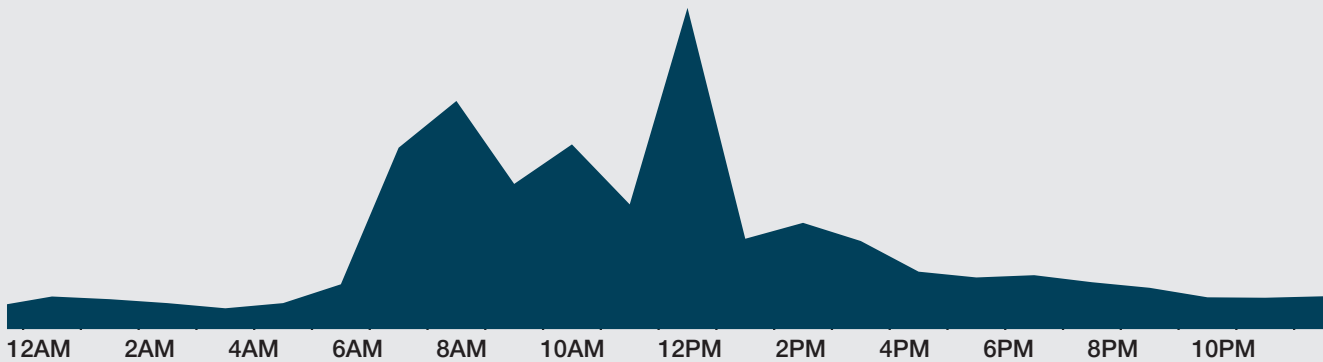
Total Lost Time Incidents in All Industries ▶ 8,292

78% of Lost Time Incidents are in Top 6 Industries



Injury Incidents by Time of Day

Most Public Administration incidents occurred during the noon hour.



Injury Incidents by Day of the Week

Most Public Administration incidents occurred on a Monday.

S	M	T	W	T	F	S
877	1,824	1,819	1,768	1,739	1,573	980



Injury Incidents by Month

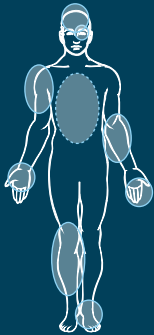
The highest number of Public Administration incidents occurred in December.

JAN	FEB	MAR
867	691	745
APR	MAY	JUN
694	627	924
JUL	AUG	SEP
1,061	1,045	991
OCT	NOV	DEC
911	941	1,083



Top 10 Injury Incidents by Body Part

In Public Administration, Multiple Body Parts was the category with the highest number of incidents.

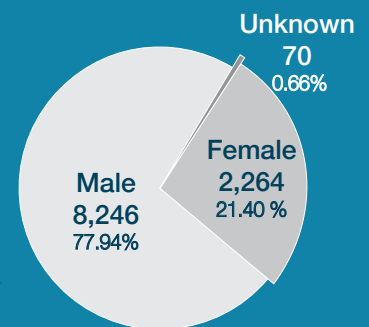


Multiple Body Parts	1,734
No Physical Injury	1,268
Knee(s)/Lower Leg(s)	839
Wrist(s)/Hand(s)	739
Lung(s)/Internal Organs	649
Back	608
Body Systems	607
Finger(s)/Thumb(s)	601
Upper Arm(s)/Shoulder(s)	553
Ankle(s)/Foot/Feet	496



Injury Incidents by Gender

In Public Administration, males had over three times more incidents than females.



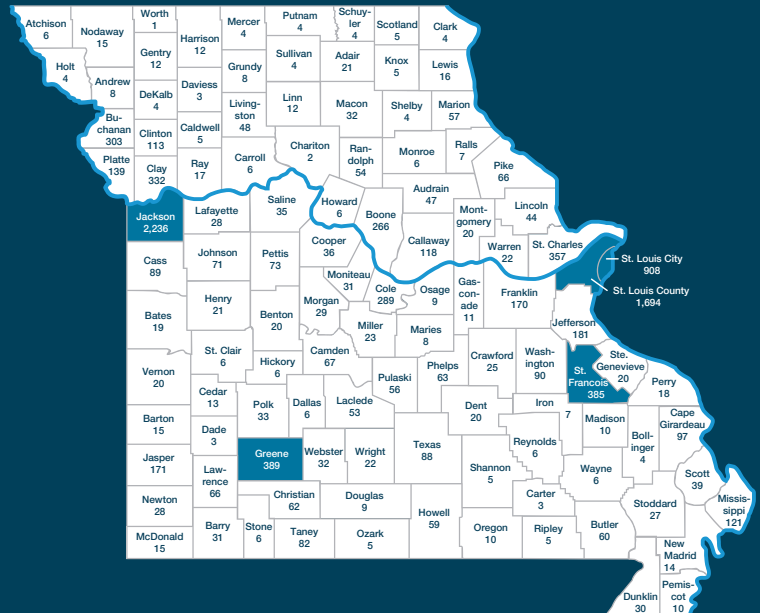


Incidents by Age Group
The 30-39 age group had the highest number of injury incidents in Public Administration.

Age Group	Public Administration	All Industries Total
10-15	5	41
16-19	105	3,466
20-29	2,418	21,808 <small>Highest Total</small>
30-39	2,739	19,835
40-49	2,454	17,576
50-59	2,147	18,283
60-69	639	8,714
70-79	64	1,110
80-89	9	118
Unknown	0	5



Incidents by County
Jackson County had the most Public Administration injury incidents.



Top 5 Counties with the Most Incidents

Jackson	2,236		
St. Louis County	1,694	Greene	389
St. Louis City	908	St. Francois	385

Injury Incidents by Cause

Most public administration injury incidents are caused by pandemic

Pandemic	2,637
Lifting	549
Strain or Injury by NOC	529
Fellow Worker, Patient	458
Fall, Slip, Trip, NOC	453

Injury Incidents by Nature

The highest number of Public Administration injury incidents are related to COVID-19

COVID-19	2,674
Strain or Tear	1,827
Sprain or Tear	1,331
Contusion	1,144
Laceration	865

Visit safeatwork.mo.gov to learn more ways to keep your workplace safe.