

ANALYZING WORKPLACE INJURIES IN THE Retail Trade Industry

To eliminate workplace injuries and fatalities, we must understand when, why and how they happen. Having these specific analytics on hand will allow businesses in hazardous industries to target problem areas and initiate solutions that will lower the number of workplace accidents.

The Retail Trade sector is comprised of establishments engaged in retailing merchandise, generally without transformation, and rendering services incidental to the sale of merchandise to the general public.

The highest number of injury incidents in the Retail Trade industry occurred:



at
Noon



on
Monday



in
July



on
Wrists/
Hands



on
Males



within
20-29 Age
Group



in
St. Louis
County

Ranked #6 in Workplace Fatalities

7 out of 119 Fatalities are in Retail Trade ▶ 5.88%



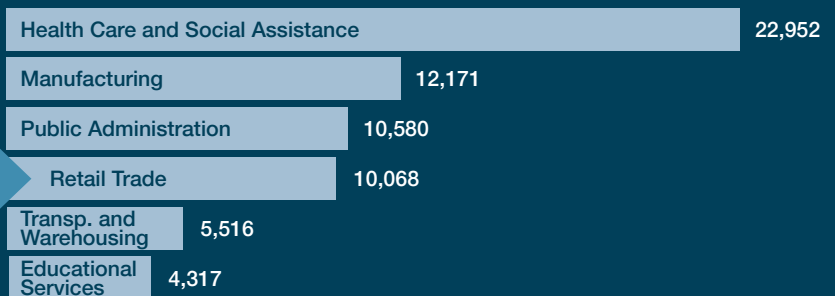
Total Incidents in Top 6 Industries ▶ 65,604

Total Incidents in All Industries ▶ 90,956

72% of All Incidents are in Top 6 Industries

RANKED #4
IN HIGHEST NUMBER OF
INJURY INCIDENTS

Top Industries in Number of Injury Incidents



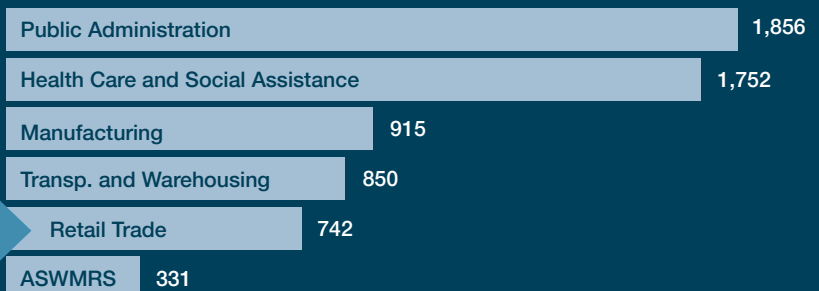
Top Industries in Lost Time Injury Incidents

Total Lost Time Incidents in Top 6 Industries ▶ 6,446

Total Lost Time Incidents in All Industries ▶ 8,292

78% of Lost Time Incidents are in Top 6 Industries

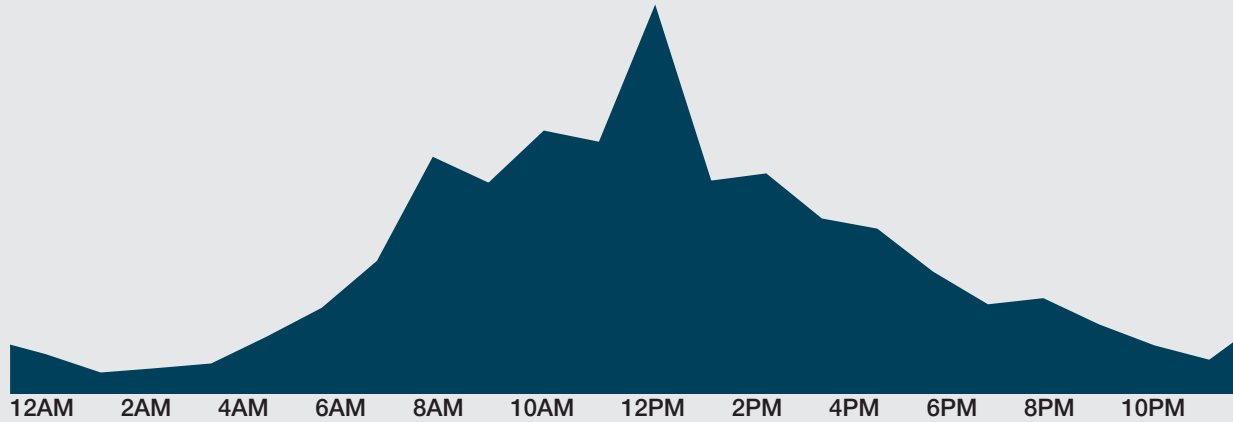
RANKED #5
IN THE MOST LOST TIME
INJURY INCIDENTS





Injury Incidents by Time of Day

Most Retail Trade incidents occurred during the Noon hour.



Injury Incidents by Day of the Week

Most Retail Trade incidents occurred on a Monday.

S	M	T	W	T	F	S
909	1,689	1,596	1,625	1,583	1,525	1,141

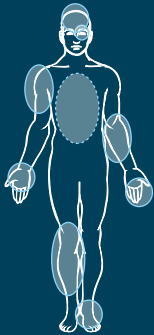


Injury Incidents by Month
The highest number of Retail Trade incidents occurred in July.

JAN	FEB	MAR
963	831	801
APR	MAY	JUN
633	673	912
JUL	AUG	SEP
976	856	901
OCT	NOV	DEC
917	726	879

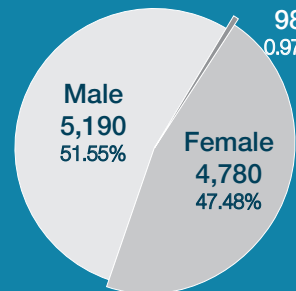


Top 10 Injury Incidents by Body Part
Wrist(s)/Hand(s) were the most injured body part in Retail Trade.



Wrist(s)/Hand(s)	1,204
Finger(s)/Thumb(s)	1,149
Multiple Body Parts	1,102
Ankle(s)/Foot/Feet	963
Back	869
Knee(s)/Lower Leg(s)	848
Upper Arm(s)/Shoulder(s)	760
Elbow(s)/Lower Arm(s)	451
Multiple Head Injury	373
Eye(s)	244

Unknown
98
0.97%



Injury Incidents by Gender
In Retail Trade, males had more incidents than females.



Incidents by Age Group
The 20-29 age group had the highest number of injury incidents in Retail Trade.

Age Group	Retail Trade	All Industries Total
10-15	3	41
16-19	982	3,466
20-29	2,685	21,808 <small>Highest Total</small>
30-39	1,678	19,835
40-49	1,503	17,576
50-59	1,816	18,283
60-69	1,102	8,714
70-79	267	1,110
80-89	31	118
Unknown	1	5



Incidents by County
St. Louis County had the most Retail Trade injury incidents.



Top 5 Counties with the Most Incidents

St. Louis County	1,976		
Jackson	1,394	Greene	670
St. Charles	779	Clay	549

Injury Incidents by Cause

Most injury incidents in retail trade occur due to lifting

Lifting	1,081
Strain or Injury by, NOC	930
Fall, Slip, Trip, NOC	623
Falling or Flying Object	618
On Same Level	574

Injury Incidents by Nature

The highest number of injury incidents in retail trade are strains and tears

Strain or Tear	2,671
Contusion	2,000
Laceration	1,538
All Other Specific Injuries, NOC	781
Sprain or Tear	596

Visit safeatwork.mo.gov to learn more ways to keep your workplace safe.

